



B
U
R
G

Burg Giebichenstein Kunsthochschule Halle
University of Art and Design

“Es gibt Berufe, die mehr Schaden anrichten als der des Industriedesigners, aber viele sind es nicht.”

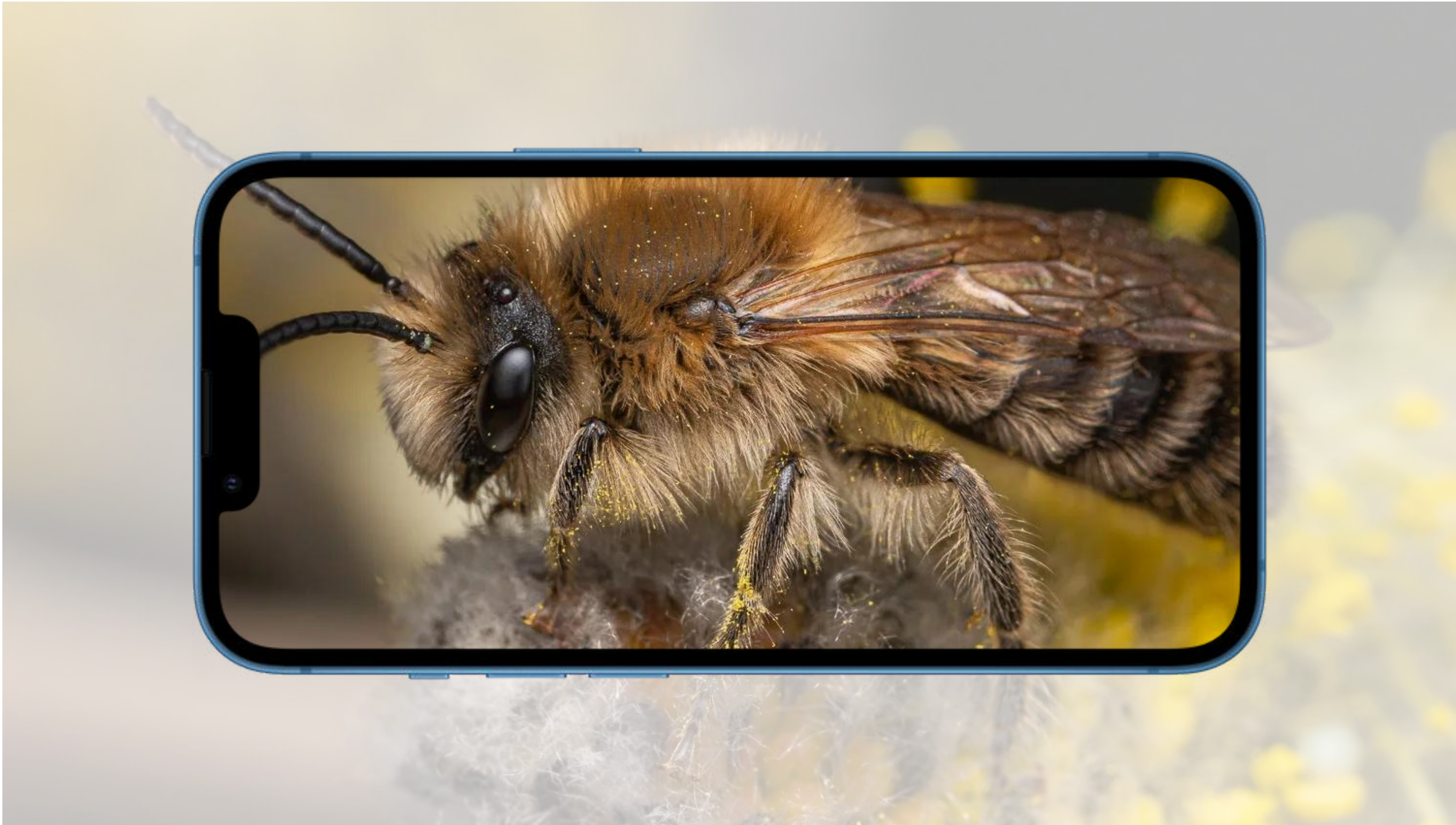


B

U

R

G



B

U

R

G

Frühlings-Seidenbiene (Colletes cunicularius)
Wildbiene des Jahres, 2023



B

U

R

G

Frühlings-Seidenbiene (Colletes cunicularius)
Wildbiene des Jahres, 2023



B

U

R

G

Materialism (Iphone 4s)
Studio Drift, 2010



B
U
R
G

madeLocal

Schritt 5: Das alte oder kaputte Gestell wird dann zu madeLocal gebracht.



Vor Ort wird es mit einem simplen Verfahren recycelt und wiederaufbereitet.

Rezykliertes Chitosan wird dem neugewonnenem Chitosan zugegeben und gelangt so wieder in ein neues Gestell oder andere chitosanbasierte Anwendungen.

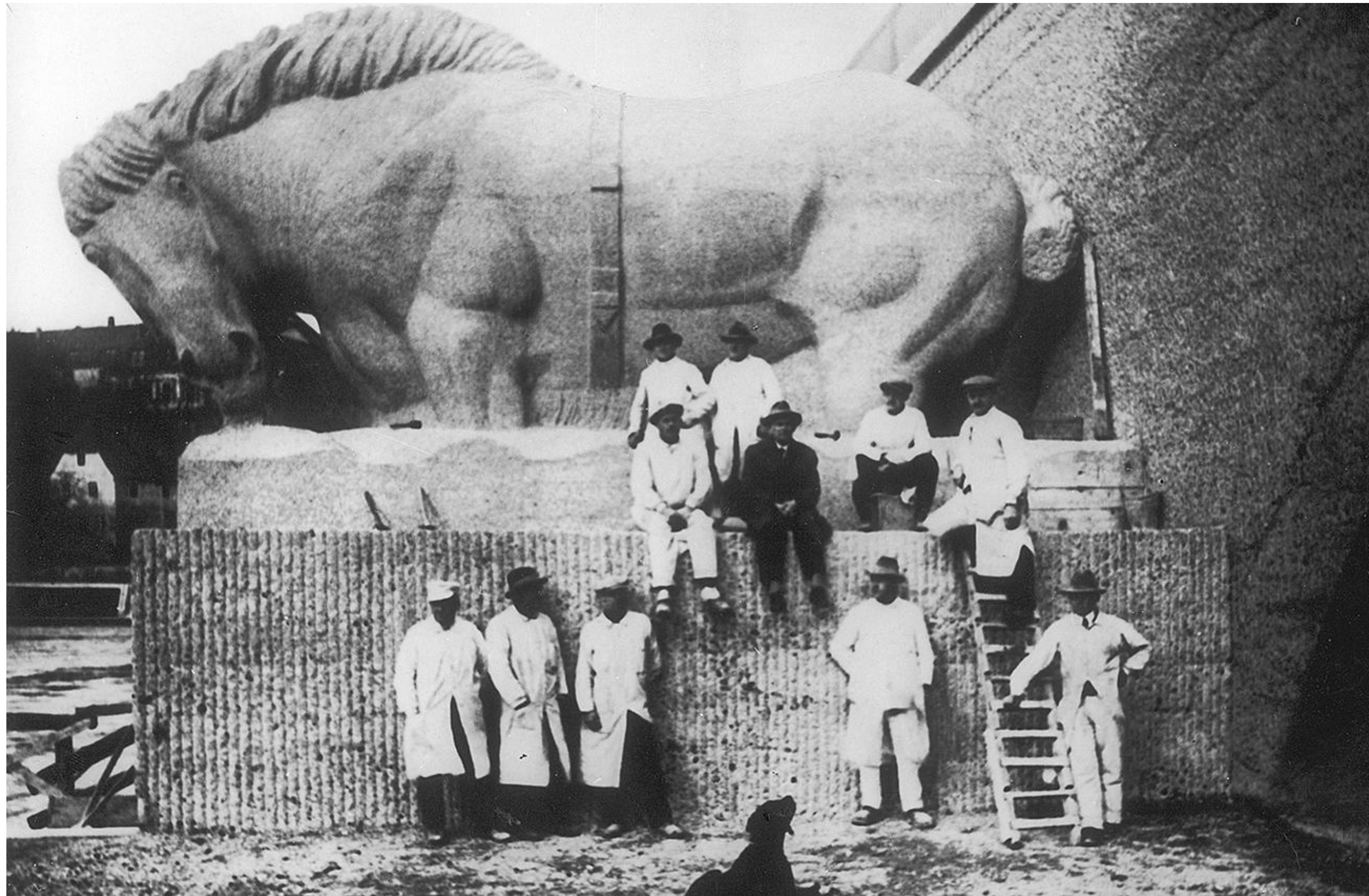


B

U

R

G



Marcks Pferd, Kröllwitzer Brücke
Burgarchiv, 1928



B

U

R

G



B
U
R
G

Holzwerkstatt
Burg Halle, 2019



B

U

R

G



B
U
R
G



B
U
R
G

The minimal Design Team:

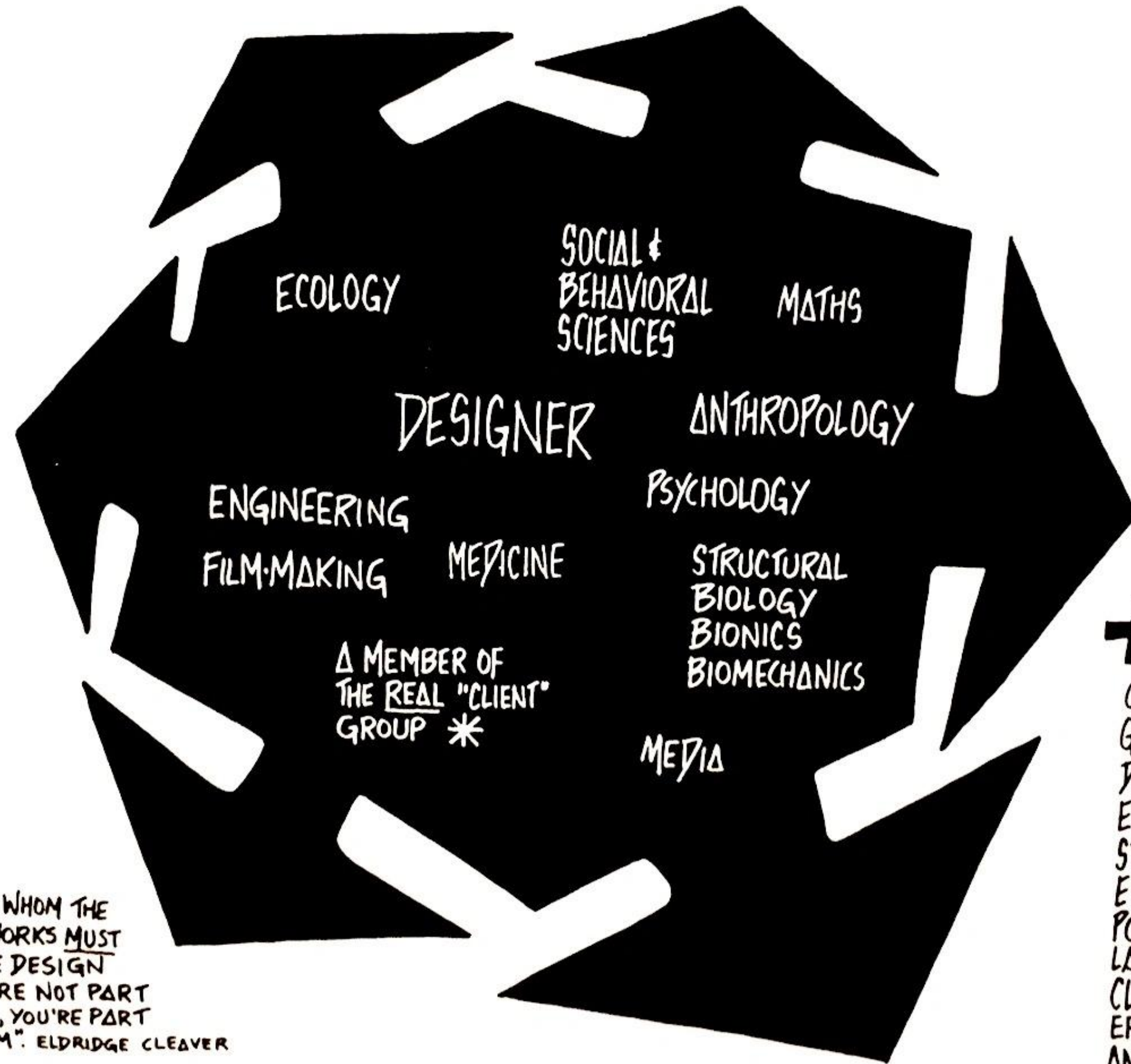


B

U

R

G



+ **MAYBE:**
COMPUTER SCIENCE
GAME THEORY
DEMOGRAPHY
ETHOLOGY
STATISTICS
ECONOMICS
POLITICS
LAW
CLIMATOLOGY
ERGONOMICS
AND MUCH ELSE....

* THE PEOPLE FOR WHOM THE DESIGN TEAM WORKS MUST BE PART OF THE DESIGN TEAM: "IF YOU'RE NOT PART OF THE ANSWER, YOU'RE PART OF THE PROBLEM." ELDRIDGE CLEAVER

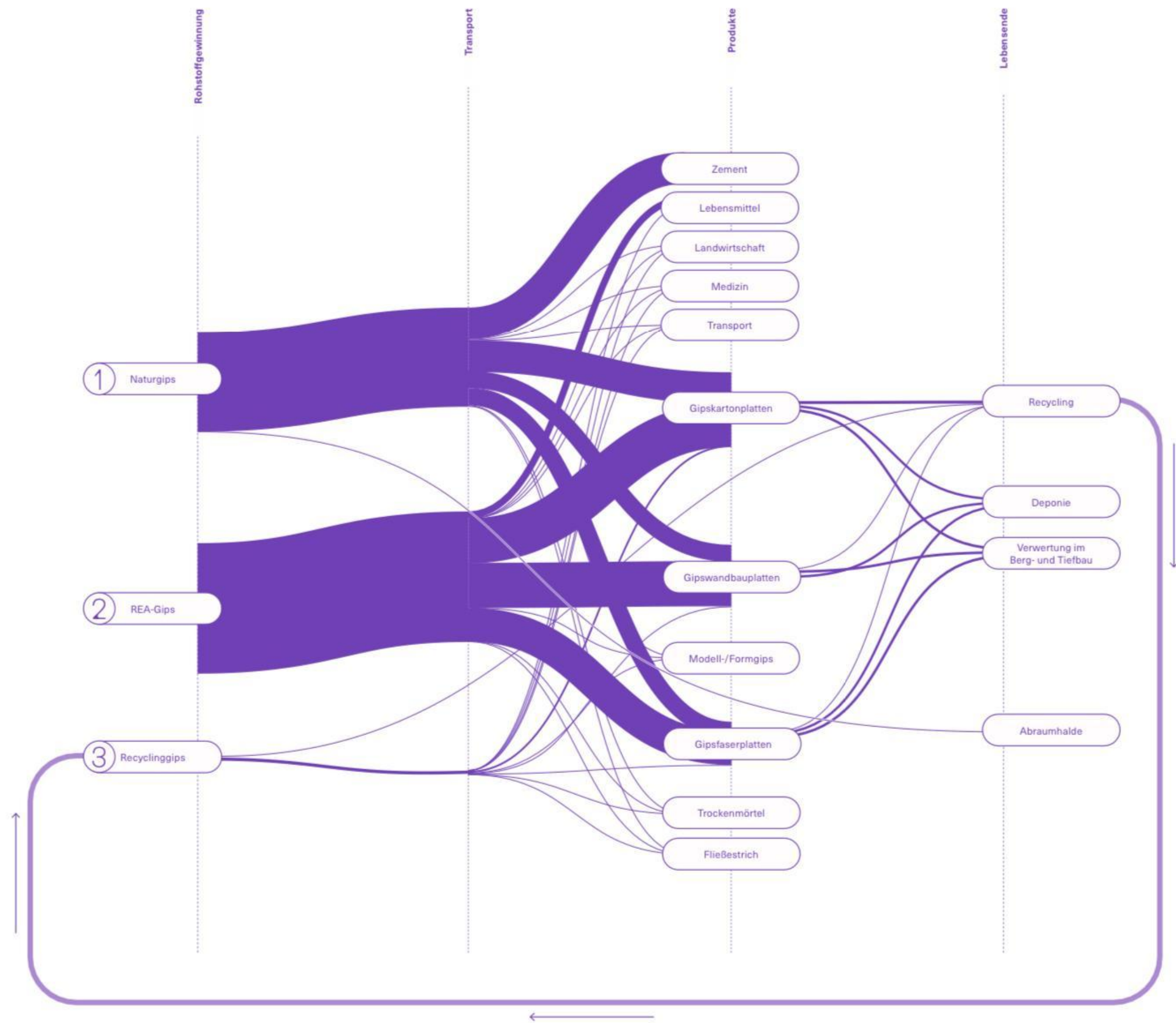


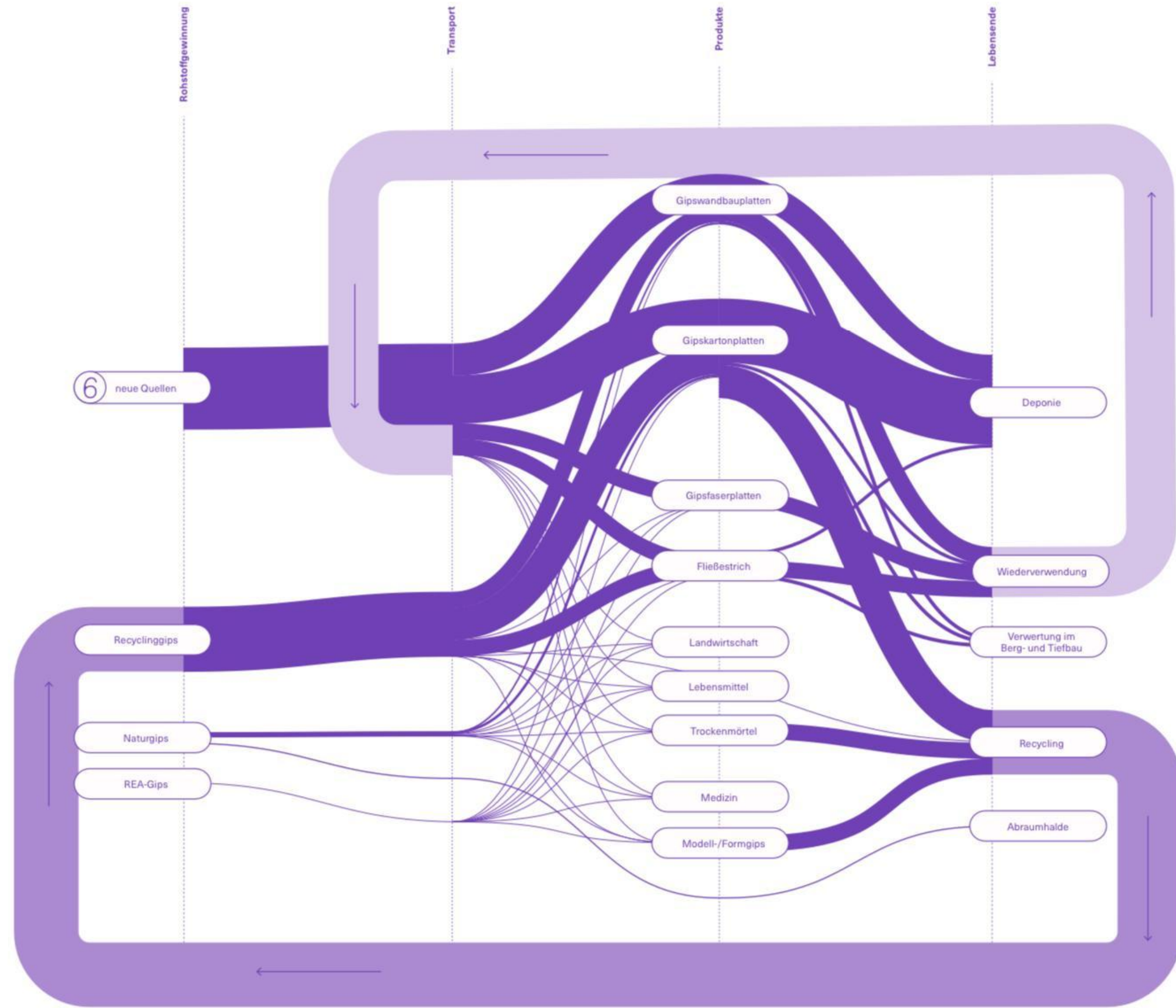
B
U
R
G

SustainLab
Burg Giebichenstein Kunsthochschule Halle, 2020



B
U
R
G





B
U
R
G



B
U
R
G



B
U
R
G

“We must remember that our grand strategy is based on producing the artifacts that will induce the right behaviors rather than depending on politically enacted and enforced reforms.”



B

U

R

G



B
U
R
G



prog/rammed earth
SustainLab, 2020



B
U
R
G



B
U
R
G

1. *“Everything is connected to everything else.”*
2. *“Everything must go somewhere.”*
3. *“Nature knows best.”*
4. *“There ain’t no such thing as free lunch.”*

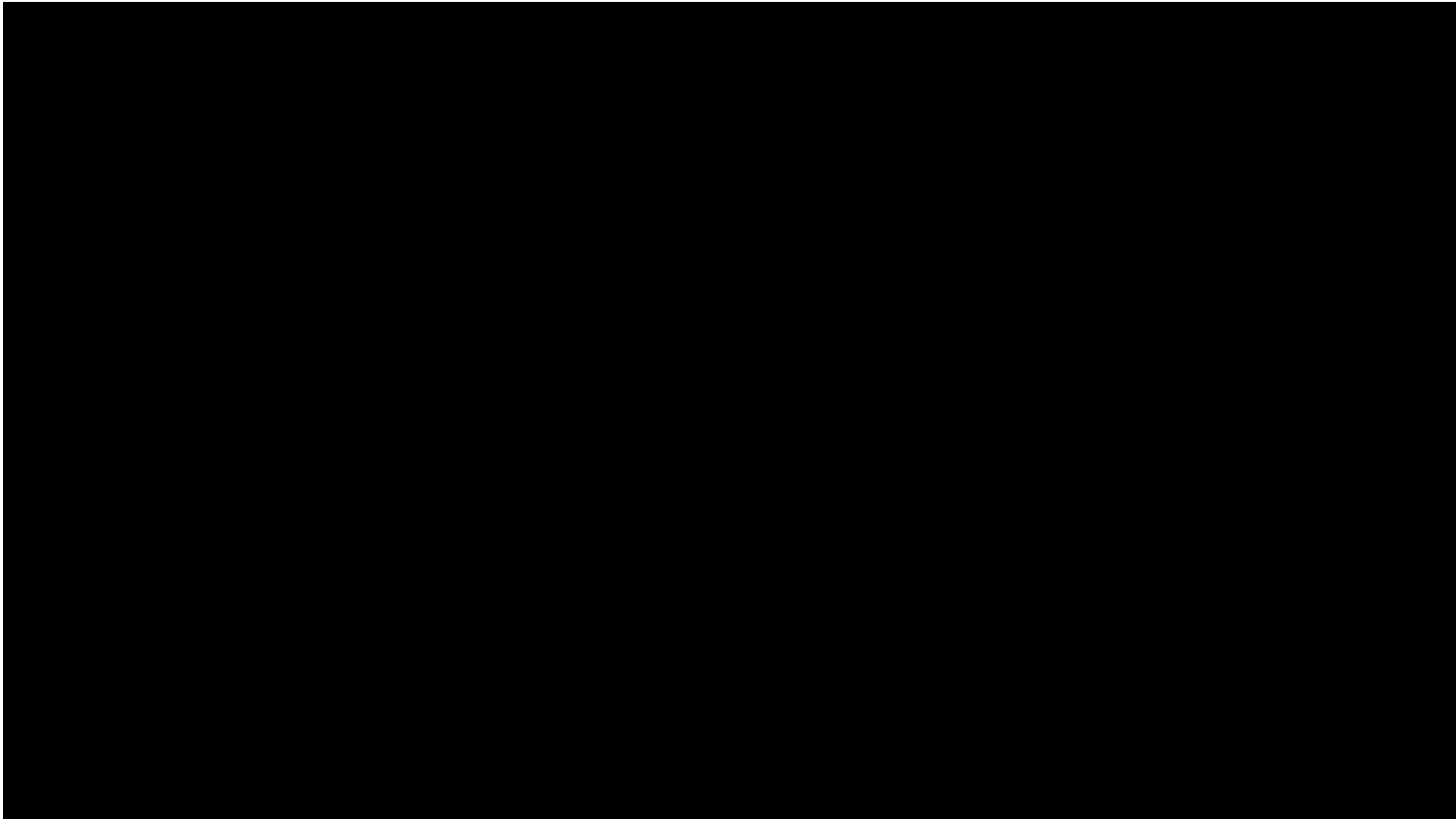


B

U

R

G



B

U

R

G

- 1 Huthmacher, Werner. *Neue Mediathek*. 2015. [https://www.burg-halle.de/home/141_beiling/2016/07-16/WH1623-2741_web_Foto - Werner Huthmacher.jpg](https://www.burg-halle.de/home/141_beiling/2016/07-16/WH1623-2741_web_Foto_-_Werner_Huthmacher.jpg)
- 2 Papanek, Victor. *Design for the Real World: Human Ecology and Social Change*. First American Edition. New York: Pantheon Books, 1971. S.20.
- 3 Meyer, Philipp. *Colletes cunicularius Männchen*. 2023. <https://wildbienenlexikon.at/wp-content/uploads/Colletes-cunicularius-Maennchen-7.jpg>
- 4 Meyer, Philipp. *Colletes cunicularius Männchen*. 2023. <https://wildbienenlexikon.at/wp-content/uploads/Colletes-cunicularius-Maennchen-7.jpg>
- 5 Studio Drift. *Materialism, Iphone 4s*. 2010. <https://studiodrift.com/work/materialism/>
- 6 Greiner, Max. *madeLocal*. 2021. <https://www.burg-halle.de/design/industriedesign/industriedesign/studienarbeiten/project/17839/>
- 7 Greiner, Max. *madeLocal*. 2021. <https://www.burg-halle.de/design/industriedesign/industriedesign/studienarbeiten/project/17839/>
- 8 Burgarchiv. *Marcks Pferd Kröllwitzer Brücke*. 1928. <https://www.burg-halle.de/hochschule/presse/informationen-zur-burg/>
- 9 Muessiggang, Patrick. *Holzwerkstatt*. 2019. https://www.burg-halle.de/home/_processed_/2/7/csm_2022_Holzwerkstatt_leer_62907586f9.jpg
- 10 BurgLabs. *BioLab*. 2020. <https://www.burg-halle.de/hochschule/einrichtungen/burglabs/biolab/>
- 11 Luck, Jana. *Habitat, Petrischalen*. 2022. <https://www.burg-halle.de/burglabs-present/habitat/>
- 12 Luck, Jana. *Habitat, Dipmoulding*. 2022. <https://www.burg-halle.de/burglabs-present/habitat/>
- 13 Papanek, Victor. *The Minimal Design Team. Big Character Poster No. 1: Work Chart for Designers*. 1973. <https://orgdesignfordesignorgscom.files.wordpress.com/2017/03/the-minimal-design-team.jpg>
- 14 BurgLabs. *SustainLab*. 2020. <https://www.burg-halle.de/hochschule/einrichtungen/burglabs/sustainlab/>
- 15 Seils, Norman. *(un)certain flows, Rauchentschwefelungsanlage*. 2022. <https://www.burg-halle.de/burglabs-present/uncertain-flows/>
- 16 Luck, Jana. *(un)certain flows, Materialsystem Gips: heute*. 2022. <https://www.burg-halle.de/burglabs-present/uncertain-flows/>
- 17 Luck, Jana. *(un)certain flows, Szenario 2050: Alternative Materialien*. 2022. <https://www.burg-halle.de/burglabs-present/uncertain-flows/>
- 18 Luck, Jana. *prog/rammed earth*. 2022. <https://www.burg-halle.de/burglabs-present/programmed-earth/>
- 19 Luck, Jana. *prog/rammed earth, Co-Fabrikation*. 2022. <https://www.burg-halle.de/burglabs-present/programmed-earth/>
- 20 Fuller, Buckminster. *Critical Path*. New York: St. Martin's Press. 1981. S. 252.
- 21 Luck, Jana. *prog/rammed earth*. 2022. <https://www.burg-halle.de/burglabs-present/programmed-earth/>
- 22 Luck, Jana. *prog/rammed earth*. 2022. <https://www.burg-halle.de/burglabs-present/programmed-earth/>
- 23 Luck, Jana. *prog/rammed earth*. 2022. <https://www.burg-halle.de/burglabs-present/programmed-earth/>
- 24 Luck, Jana. *BurgLabs present*. 2022. <https://www.burg-halle.de/burglabs-present/>
- 25 Commoner, Barry. *Closing the Circle. Nature, Man, Technology*. New York: Alfred A. Knopf. 1971. S. 16.
- 26 Eames Office. *Powers of Ten*. 1977. <https://www.youtube.com/watch?v=0fKBhvDjuy0>

**B****U****R****G**